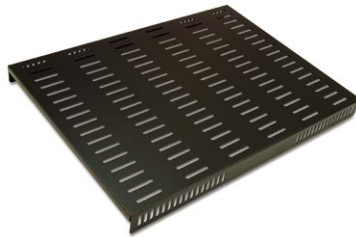




### 19" Cantilever Shelf (Modem Shelf)

Front fixing shelves ideal for wall cabinets.

- 2U 250mm deep Pt No 9823225
- 2U 400mm deep Pt No 9823240
- 4U 400mm deep Pt No 9823440
- (other sizes available as special order)
- / G = Grey / B = Black



### 19" Fixed Ventilated Shelves

Fits between mounting angles, fixing kit included.

- 400mm deep Pt No 9823040
- 500mm deep Pt No 9823050
- 600mm deep Pt No 9823060
- 700mm deep Pt No 9823070
- 800mm deep Pt No 9823080
- / G = Grey / B = Black



### 19" Sliding Shelf Assembly

Front and rear fixing on to 19" mounting angles, fixing kit included. Also available Heavy Duty Server Sliding Shelf.

- 400mm deep Pt No 9822106
- 600mm deep Pt No 9822108
- 700mm deep Pt No 9823370
- / G = Grey / B = Black



### 19" Panel Blanks

Aluminum for reduced weight, epoxy painted in light grey or black. Can be screen printed with your company logo.

- 1U Pt No 3830101
- 2U Pt No 3830102
- 3U Pt No 3830103
- 4U Pt No 3830104
- also 5U to 10U available as specials



### Vertical Cable Trays

100mm or 150mm width's, epoxy painted in light grey or black with earth tags (50mm and 300mm available as specials).

- |     | 100mm         | 150mm         |
|-----|---------------|---------------|
| 12U | Pt No 7900612 | Pt No 7900712 |
| 18U | Pt No 7900618 | Pt No 7900718 |
| 24U | Pt No 7900624 | Pt No 7900724 |
| 27U | Pt No 7900627 | Pt No 7900727 |
| 37U | Pt No 7900637 | Pt No 7900737 |
| 42U | Pt No 7900642 | Pt No 7900742 |
| 45U | Pt No 7900645 | Pt No 7900745 |



### D Ring Cable Management

Supplied in packs of 4, ideal for vertical cable management especially on 800 wide cabinets.

- |           |               |         |
|-----------|---------------|---------|
| 50 x 50   | Pt No 7901721 | Pk of 4 |
| 50 x 100  | Pt No 7901722 | Pk of 4 |
| 100 x 50  | Pt No 7901723 | Pk of 4 |
| 100 x 100 | Pt No 7901724 | Pk of 4 |



### 19" Cable Management Panels

1U 4 ring cable management panel - black, also available 1U recessed (80mm) panel with cable fixing holes.

- 1U 4 ring panel Pt No 7901520
- 1U recessed panel Pt No 7901550



### Chassis Guides

Ideal for supporting heavy equipment in a cabinet, supplied in pairs. They fit to vertical mounting angles either side of the cabinet.

- 400mm Pt No 9821906
- 600mm Pt No 9821908
- 700mm Pt No 9821909
- 800mm Pt No 9821910



### Adjustable Chassis Guide

Flexible solution adjusts from 590mm to 830mm, used to support heavy servers or UPS's, supplied in pairs. Once depth is decided they fit either side of cabinet to vertical mounting angles.

- Pt No 9821850 590mm to 830mm

**CALL FOR A QUOTATION**

CALL FOR A QUOTATION



### Adjustable Feet

Used to level cabinet when installed on uneven floor. Supplied in a kit of four (M10x 70mm). Weight limit 300kgs static.

Pt No 6450056



### Heavy Duty Castors

Twin wheeled Heavy Duty Castors, supplied in kit of four. Heavy Duty Server Castors available in kit of four.

Std Heavy Duty Pt No 6450061  
Server Castors Pt No 6450072



### Cage Nut Sets & Baying Kit

For panel fixing and equipment installation, packs of 50. Baying Kit, allows cabinets to be bayed together.

Pk of 50 cage nuts Pt No 3830015  
Baying kit Pt No 2940922



### 19" Primary Fan Trays

19" Front Mounting Fan Trays, supplied as one, two or three fan units, supplied with 13 amp plug and lead.

1U One fan unit Pt No 1830301  
1U Two fan unit Pt No 1830302  
1U Three fan unit Pt No 1830303  
/ G = Grey / B = Black

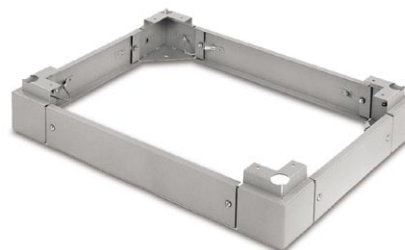


### Roof Fan Trays

Fan Trays draw air through cabinet to cool equipment. Available in 2 or 4 fan version supplied with 13 amp plug and lead.

	2 Fan	4 Fan
600 x 600	Pt No 1836602	Pt No 1836604
600 x 800	Pt No 1836802	Pt No 1836804
800 x 600	Pt No 1838602	Pt No 1838604
800 x 800	Pt No 1838802	Pt No 1838804

/ G = Grey / B = Black



### Plinth Kit

Plinth Kit includes 4 x corner sections, earth kit, plain or vented infill panels, or remove panel to allow cable entry, overall height of 100mm.

Plinth 4 x corners Pt No 2943740  
Infill Plain 600 Pt No 4971921  
Infill Plain 800 Pt No 4972933  
Infill Plain 1000 Pt No 4971944  
Vented infill panels also available  
/ G = Grey / B = Black



### Fan Tray Insert Panels

Used in conjunction with Roof Tray Fan when installing Fan Tray in 1000 deep cabinet.

600 x 100 Pt No 1830661  
600 x 200 Pt No 1830662  
800 x 100 Pt No 1830681  
800 x 200 Pt No 1830682  
/ G = Grey / B = Black



### Base Cover Plate

Base Cover Plate with cable entry and earth lead. Controls air flow at the base of the cabinet.

600 x 600 Pt No 7900166  
600 x 800 Pt No 7900168  
800 x 600 Pt No 7900186  
800 x 800 Pt No 7900188  
/ G = Grey / B = Black



### Vertical Pillar Trims

Used to fill recess space in corner posts to improve cabinet appearance, also used to fit cabinet management brackets (supplied in pairs).

12U Pt No 29410512 37U Pt No 29410527  
18U Pt No 29410518 42U Pt No 29410542  
24U Pt No 29410524 45U Pt No 29410545  
27U Pt No 29410527