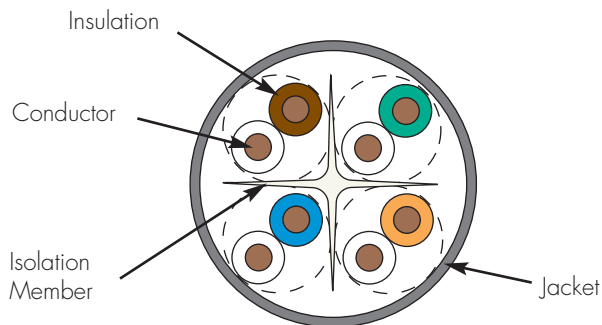
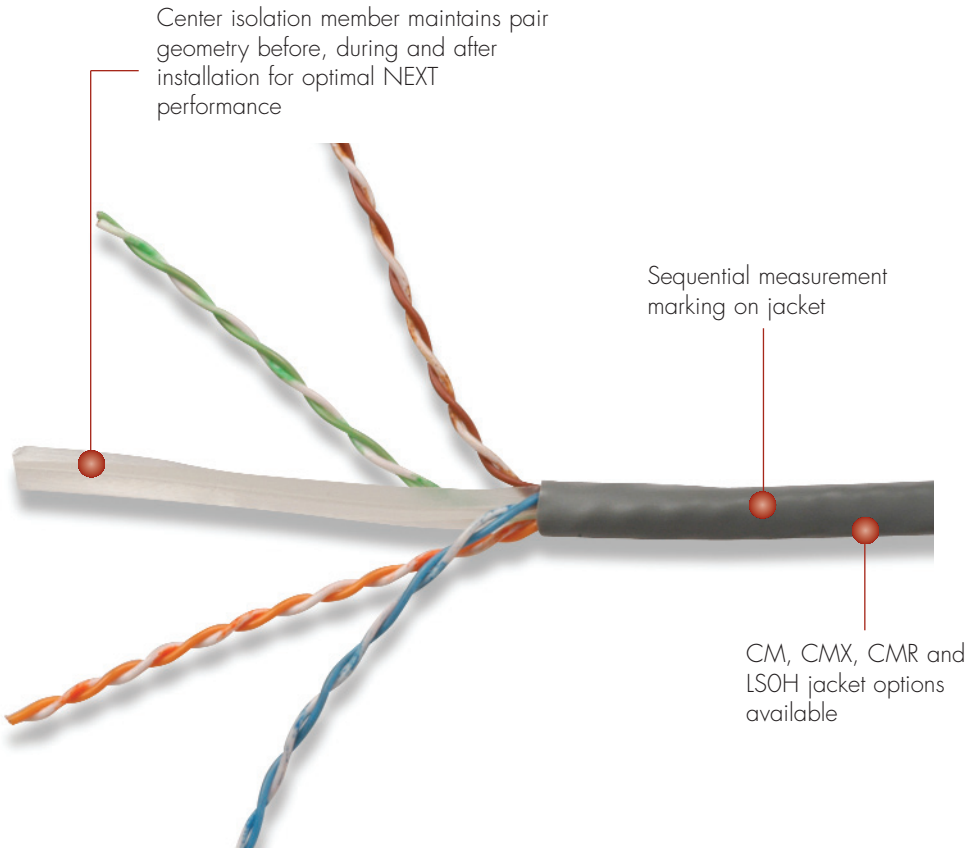


SYSTEM 6® UTP CABLE

System 6 cable provides significant headroom above all TIA/EIA and ISO/IEC category 6/class E transmission performance specifications. Combine our high performance category 6 connectivity with System 6 cable and the result is a system with superior electrical performance for optimum applications support.



CABLE — INTERNATIONAL



Cable packaged in a reel-in-a-box (305m) to protect product during shipping and facilitate tangle-free installation

- ### Cable Construction
- UTP
 - 0.57mm (0.023 in.) (23 AWG) solid bare copper
 - 6.35mm (0.25 in.) max jacket diameter
 - Round jacket
 - Center isolation member

- ### Compliance
- ISO/IEC 11801:2002 (Category 6)
 - ANSI/TIA/EIA-568-B.2-1
 - IEC 61156-5:2002 (Category 6)
 - LSOH: IEC 60332-1, IEC 60332-3, IEC 60754, and IEC 61034
 - UL CMX
 - UL CM
 - UL CMR and CSA FT4

CONNECTING THE WORLD TO A HIGHER STANDARD

WWW.SIEMON.COM



PRODUCT INFORMATION

CABLE — INTERNATIONAL

ELECTRICAL SPECIFICATIONS

DC Resistance	<9.38 Ω/100m
DC Resistance Unbalance	5%
Mutual Capacitance	5.6 nF/100m
Capacitance Unbalance	<330 pF/100m
Characteristic Impedance (ohms)	1 - 250 MHz: 100 ± 15% 100 - 550 MHz: 100 ± 22%
NVP	68%
LCL	30-10log (f/100)dB
Delay Skew	≤ 35ns

PHYSICAL PROPERTIES

	LSOH	CMR/CM/CMX
Pulling Tension (max)	110N (25 lbf)	110N (25 lbf)
Bend Radius (min)	25mm (1 in.)	25mm (1 in.)
Installation Temperature	0 to 60°C (+32 to 140°F)	-36 to 60°C (-32 to 140°F)
Storage Temperature	-20 to 75°C (-4 to 167°F)	-34 to 75°C (-30 to 167°F)
Operating Temperature	-20 to 60°C (-4 to 140°F)	-34 to 60°C (-30 to 140°F)



TRANSMISSION PERFORMANCE

■ TIA/EIA & ISO/IEC

□ SIEMON TYPICAL

Frequency (MHz)	Insertion Loss (dB)		NEXT (dB)		PS NEXT (dB)		ACR (dB)		PSACR (dB)		ACR-F (dB)		PS ACR-F (dB)		Return Loss (dB)		Propagation Delay (ns)	
	2.1	1.8	74.3	87.3	72.3	82.3	72.2	85.5	70.2	80.5	67.8	84.8	64.8	79.8	20.0	29.0	570	545
4.0	3.8	3.5	65.3	78.3	63.3	73.3	61.4	74.8	59.4	69.8	55.8	72.8	52.8	67.8	23.0	32.0	552	527
10.0	6.0	5.6	59.3	72.3	57.3	67.3	53.3	66.7	51.3	61.7	47.8	64.8	44.8	59.8	25.0	38.0	545	520
16.0	7.6	7.1	56.2	69.2	54.2	64.2	48.6	62.1	46.6	57.1	43.7	60.7	40.7	55.7	25.0	34.0	543	518
20.0	8.5	7.9	54.8	67.8	52.8	62.8	46.2	59.9	44.2	54.9	41.8	58.8	38.8	53.8	25.0	34.0	542	517
31.25	10.8	10.0	51.9	64.9	49.9	59.9	41.1	54.9	39.1	49.9	37.9	54.9	34.9	49.9	23.6	32.0	540	515
62.5	15.5	14.4	47.4	60.4	45.4	55.4	31.9	46.0	29.9	41.0	31.9	48.9	28.9	43.9	21.5	32.0	539	514
100.0	19.9	18.6	44.3	57.3	42.3	52.3	24.4	38.7	22.4	33.7	27.8	44.8	24.8	39.8	20.1	32.0	538	513
160.0	25.8	24.1	41.2	54.2	39.2	49.2	15.5	30.1	13.5	25.1	23.7	40.7	20.7	35.7	18.7	31.0	537	512
200.0	29.0	26.8	39.8	52.8	37.8	47.8	10.6	26.0	8.6	21.0	21.8	38.8	18.8	33.8	18.0	29.0	537	512
250.0	33.0	30.5	38.3	51.3	36.3	46.3	5.3	20.8	3.3	15.8	19.8	37.0	16.8	31.8	17.3	29.0	536	511
300.0*	36.6	33.7	37.1	50.0	35.1	45.0	0.5	16.3	-1.5	11.3	18.3	36.0	15.3	30.0	16.8	27.0	536	511
400.0*	43.0	40.3	35.3	48.0	33.3	43.0	-7.9	7.7	-9.9	2.7	15.8	32.0	12.8	27.0	15.9	26.0	536	511
500.0*	48.9	39.9	33.8	48.0	31.8	42.0	-15.4	8.1	-17.4	2.1	13.8	31.0	10.8	26.0	15.2	25.0	536	511
550.0*	51.8	39.7	33.2	46.0	31.2	42.0	-18.8	6.3	-20.8	2.3	13.0	30.0	10.0	26.0	14.9	24.0	536	510

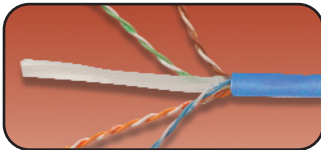
*Performance for frequencies above 250 MHz are for information only.

All performance based on 100 meters (328 ft.).

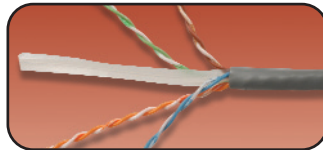
System 6® UTP 4-Pair Solid Cable:

- 9C6R4-E3PVC (CMR, CSA FT4), Blue Jacket, 305m (1000 ft.) Reel-in-Box
- 9C6M4-E3PVC (CM), Gray Jacket, 305m (1000 ft.) Reel-in-Box
- 9C6X4-E3PVC (CMX, IEC 60332-1), Gray Jacket, 305m (1000 ft.) Reel-in-Box
- 9C6L4-E3LSOH (IEC 60332-1), Violet Jacket, 305m (1000 ft.) Reel-in-Box
- 9C6H4-E3LSOH (IEC 60332-3), Violet Jacket, 305m (1000 ft.) Reel-in-Box

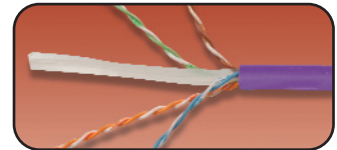
Other cable lengths also available: Add "-5CR" for 500m (1640 ft.) Reel, "-1KR" for 1000m (3,281 ft.) Reel



9C6R4-E3



9C6X4-E3/9C6M4-E3



9C6L4-E3/9C6H4-E3

Because we continuously improve our products, Siemon reserves the right to change specifications and availability without prior notice.

MAX®, MC®, BladePatch® and System 6® are trademarks of Siemon

For related product information request Spec Sheet(s):

- MAX® 6 Modules (PROD-SS-10G6MXS)
- MC® 6 Modular Patch Cords (PROD-SS-10G6MCS)
- BladePatch 6 (PROD-SS-10G6BDPS)
- HD 6 Patch Panels (PROD-SS-HD6)
- MAX Patch Panels (PROD-SS-MXP)

The Americas

Watertown, CT USA
Phone (1) 860 945 4200

Europe/Middle East/Africa

Surrey, England
Phone (44) 0 1932 571771

Asia/Pacific

Shanghai, P.R. China
Phone (86) 21 6390 6778

Japan

Tokyo, Japan
Phone (03) 5405 7650

WWW.SIEMON.COM



PROD-SS-CBL6 Rev. J 10/06 (US-INT)

© 2006 Siemon