

# TERA<sup>®</sup>-MAX PATCH PANELS

TERA-MAX 19 inch patch panels harness unprecedented performance and reliability in a shielded, high-density modular solution. Any combination of TERA, flat shielded MAX modules, and hybrid shielded Z-MAX™ 6A modules (in flat orientation) can be configured in TERA-MAX panels. In addition to standard flat TERA-MAX panels, angled versions are also offered to support high-density applications.

As outlets are snapped into place, resilient ground tabs and ground lugs assure that each outlet and cable is properly grounded for maximum protection against outside interference.

No secondary grounding operations are required, reducing overall installation time. Built-in cable management and strain relief features are integrated onto the rear of panel.



MODULAR PATCHING

Lightweight, high strength steel with black or metallic finish

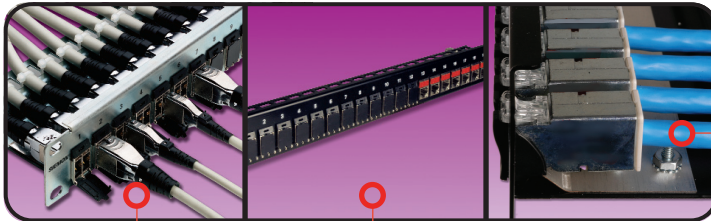
Bold port numbering enables quick identification of outlets



Panels can be mounted directly on standard 19 inch rack or cabinet

Individual modules easily snap into place, providing integrated grounding without additional steps

Angled TERA-MAX patch panels allows direct routing of cables to vertical managers, eliminating the need for horizontal cable managers



Panels feature integrated grounding via resilient ground tabs engaged during module insertion

Use 1- or 2-pair TERA patch cords for sharing multiple applications over each 4-pair TERA cable/outlet saving significant material and installation cost

Use TERA, flat shielded MAX modules, or hybrid shielded Z-MAX modules (in flat orientation) in TERA-MAX patch panel for telecommunications room applications

CONNECTING THE WORLD TO A HIGHER STANDARD

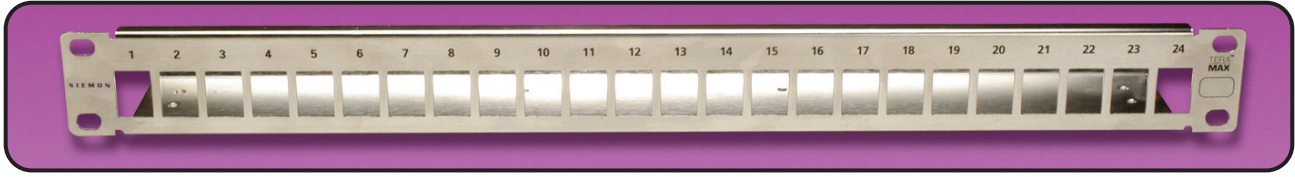
WWW.SIEMON.COM



# ORDERING INFORMATION

## TERA®-MAX® Patch Panels:

- TM-PNLZ-24 .....24-port TERA-MAX panel, metallic, 1U
- TM-PNLZ-24-01 .....24-port TERA-MAX panel, black, 1U



- TM-PNLZA-24 .....24-port Angled TERA-MAX panel, metallic, 1U
- TM-PNLZA-24-01 .....24-port Angled TERA-MAX panel, black, 1U



Panels include designation labels, cable ties and mounting hardware.  
 Note: 1U = 44.5mm (1.75 in.)

MODULAR PATCHING

Because we continuously improve our products, Siemon reserves the right to change specifications and availability without prior notice.  
 TERA®, MAX® and Z-MAX™ are a trademarks of Siemon

For related product information request visit [www.siemon.com](http://www.siemon.com)

**The Americas**  
 Watertown, CT USA  
 Phone (1) 860 945 4200 US  
 Phone (1) 888 425 6165 Canada

**Europe/Middle East/Africa**  
 Surrey, England  
 Phone (44) 0 1932 571771

**Asia/Pacific**  
 Shanghai, P.R. China  
 Phone (86) 21 6390 6778

**Central & South America**  
 Bogota, Colombia  
 Phone (571) 317 2121

PROD-SS-TRAPP Rev. E 3/09

© 2009 Siemon

WWW.SIEMON.COM

ISO 9001  
 CERTIFIED

ISO 14001  
 CERTIFIED



SIEMON™